

# 3 REASONS

## GOOD INFANT MENTAL HEALTH MATTERS



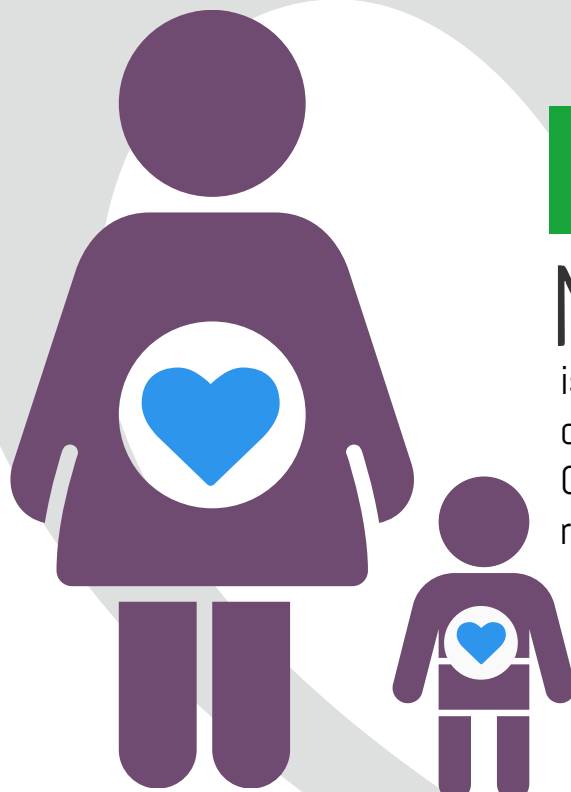
We have a shared stake **to make sure babies develop sturdy brain architecture**, because this foundation supports a lifetime of learning and productive participation in society. A reliable caregiver who is responsive to a baby's needs is the base for secure attachment, which allows an infant to explore and learn.



**Toxic stress** from broken caregiver-infant relationships can push a baby's stress hormones into overdrive. When constantly present, these hormones disrupt brain and physical development. And babies can't learn if their brains and bodies are working against them. **The antidote to toxic stress?** Affection and protection by a nurturing caregiver.



**Secure attachment** is a fundamental building block of social function. Children need relationships with sensitive caregivers to self-regulate, get along with others, solve problems, and be productive -- the basis for civic and economic prosperity.



# INFANT MENTAL HEALTH

is the optimal social, emotional, and cognitive well-being of children ages 0 to 3, developed by secure and stable relationships with nurturing caregivers.



Infant Toddler Mental Health  
Coalition of Arizona

P.O. Box 2234 | Phoenix, AZ 85002  
itmhca.org



ITMHCA is a member of the  
**Alliance for the Advancement of  
Infant Mental Health**  
mi-aimh.org/alliance